









## LUXURY TURNKEY VILLAS

---





01

## Models GammaVilla

GammaVilla offers exclusive villas built with advanced technologies and high-quality materials, delivering comfort, luxury, and efficiency.

Thanks to filters by size and shape, you can easily find the ideal solution to match your space and style requirements.







### Square footage

Choose the villa based on the size that best fits your project.

### Shape

Discover models with linear design, courtyard style, L-shape, single-level, or multi-story layouts.

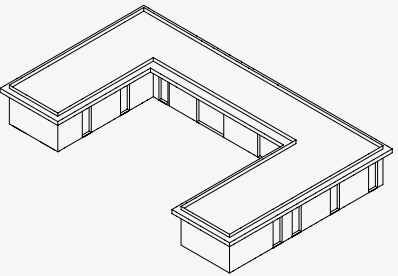
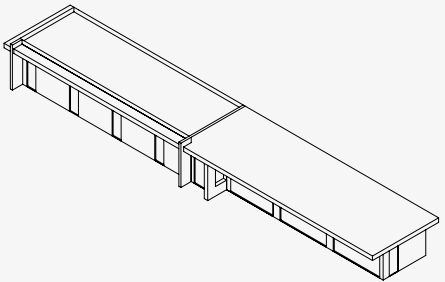
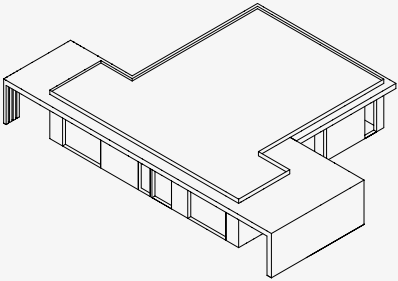
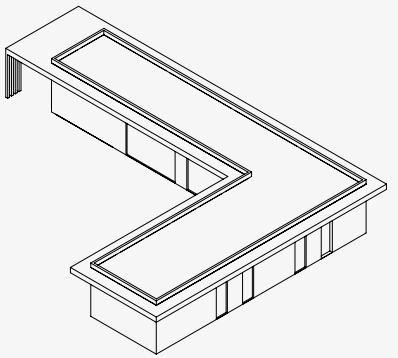
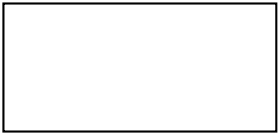
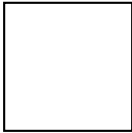
### Rooms

Discover the models by number of bedrooms, bathrooms, garage, and gym.

### Discover the features

Each model features architectural solutions, advanced systems, and technological equipment, all perfectly integrated.

### MODELS



Discover all the models







Luna represents a perfect balance between symmetry and elegance.  
The main structure is developed on a single level, featuring large windows overlooking the garden and the pool, the true centerpiece of the outdoor space.  
The covered side porch invites outdoor gatherings, while the garage, harmoniously integrated into the structure, highlights the perfect blend of aesthetics and functionality.



symmetrical shape



optimized spaces



compact structure



visual balance











Luna combines symmetry and elegance, with large windows that highlight the pool and the outdoor greenhouse, creating a harmonious and refined environment.





# 3D

Luna offers spacious and harmonious interiors, characterized by a balanced and functional layout. The symmetrical floor plan enhances the flow of the spaces, creating an elegant and welcoming atmosphere.



2 bathrooms



3 bedrooms



Living room



Dining room



Kitchen



Laundry room



Technical room



# 2D

Luna offers spacious and harmonious interiors, characterized by a balanced and functional layout. The symmetrical floor plan enhances the flow of the spaces, creating an elegant and welcoming atmosphere.





**Production Plant**

Loc. Quartaccio – Strada Provinciale 74, km 1.45  
01034 Fabrica di Roma (VT) | Italia  
Tel. +39 06 4525 4005  
[info@gammavilla.com](mailto:info@gammavilla.com)

**North America Inc.**

2400 Main Street Ext  
Sayreville NJ 08872  
Tel. +1 646 741 5850  
Tollfree: +1 866 US GAMMA  
[info.na@gammavilla.com](mailto:info.na@gammavilla.com)

**Headquarters**

GammaStone – Via Flaminia 148  
00068 Rignano Flaminio (RM) | Italia  
Tel. +39 06 4525 4005  
[info@gammavilla.com](mailto:info@gammavilla.com)

**Dubai**

Convention Tower, 4th Floor, DWTC.  
Dubai, UAE  
[info.uae@gammavilla.com](mailto:info.uae@gammavilla.com)



