





LUXURY TURNKEY VILLAS



01

Models GammaVilla

GammaVilla offers exclusive villas built with advanced technologies and high-quality materials, delivering comfort, luxury, and efficiency.

Thanks to filters by size and shape, you can easily find the ideal solution to match your space and style requirements.





Square footage

Choose the villa based on the size that best fits your project.

Shape

Discover models with linear design, courtyard style, L-shape, single-level, or multi-story layouts.

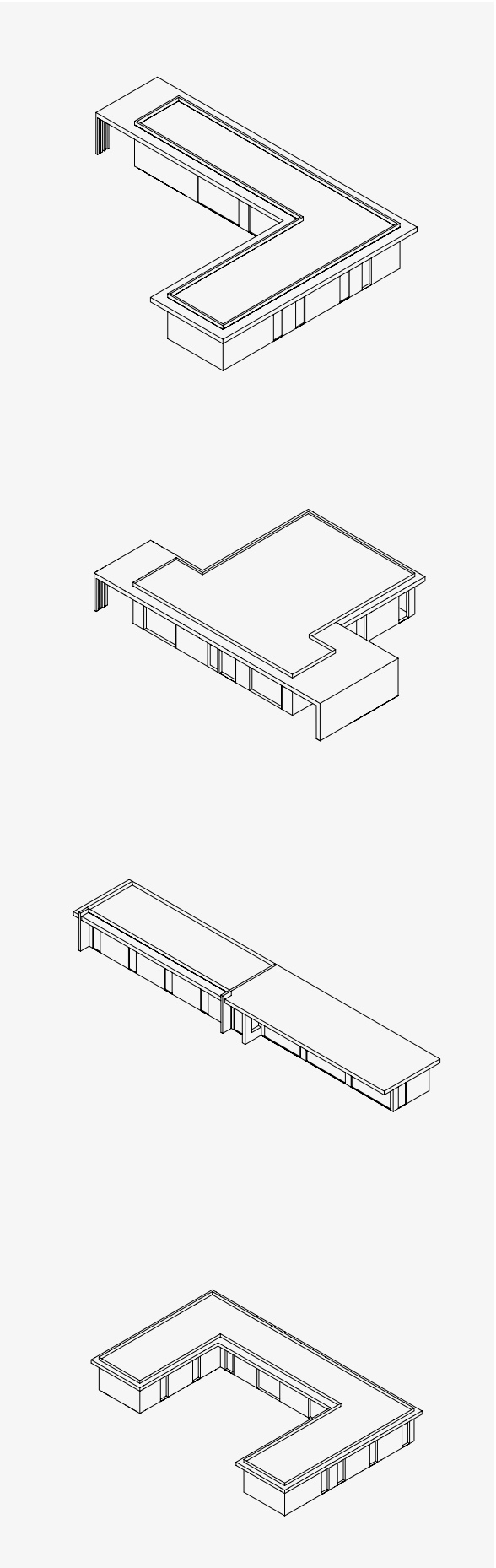
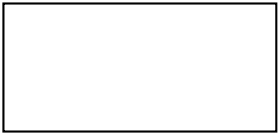
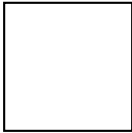
Rooms

Discover the models by number of bedrooms, bathrooms, garage, and gym.

Discover the features

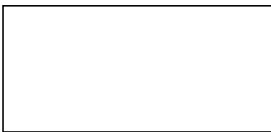
Each model features architectural solutions, advanced systems, and technological equipment, all perfectly integrated.

MODELS



Discover all the models

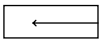




Atria characterized by its rectangular shape, is developed on a single level, offering a linear and functional design that highlights the simplicity of its forms. The rectangular layout allows for an optimal arrangement of interior spaces, with large windows opening onto the garden and pool, creating a harmonious continuity between indoors and outdoors.



minimalist design



linear space
distribution



large glazed
surfaces



possibility of optimal
orientation





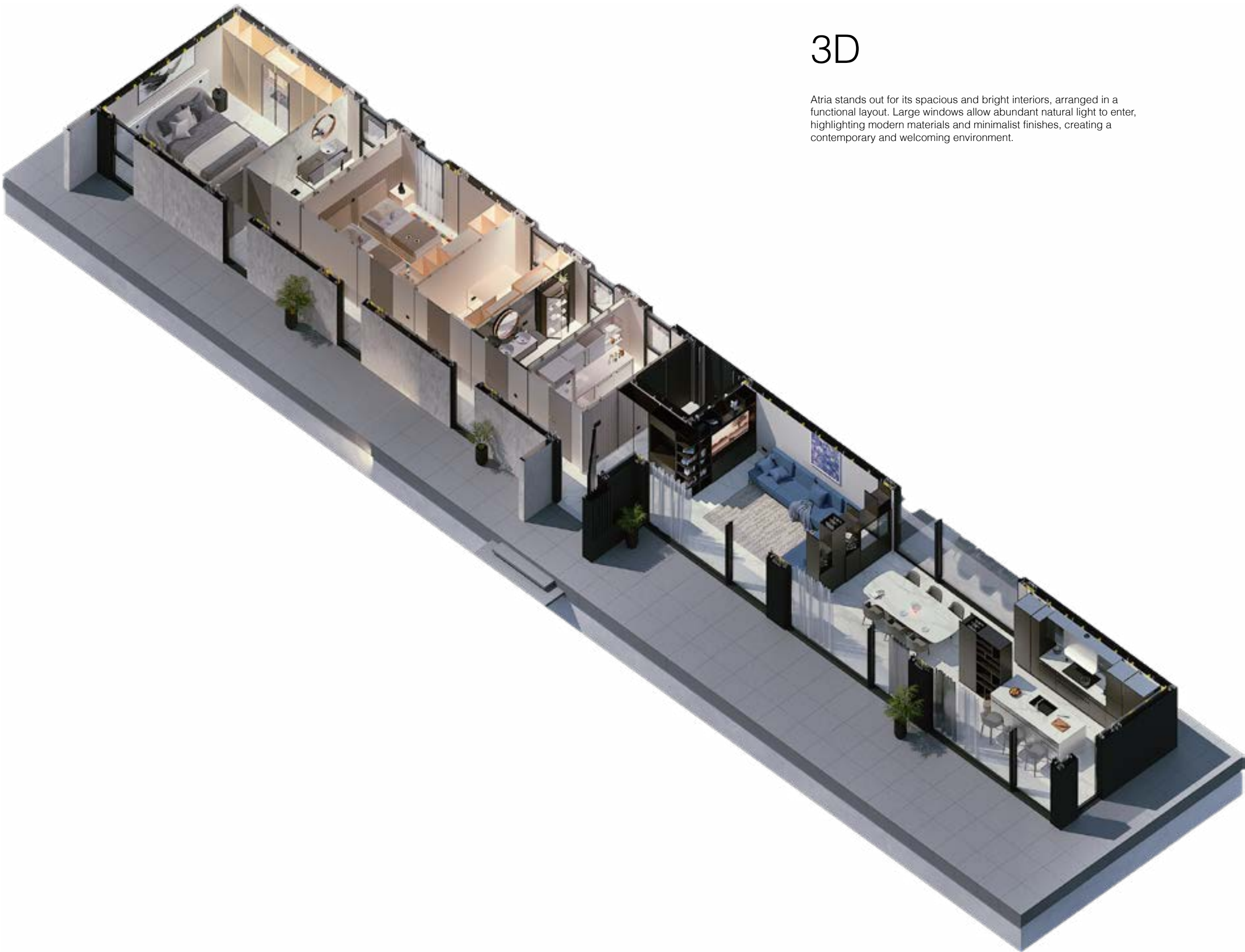


Atria expresses elegance and rigor through clean architecture immersed in nature. The large glazed surfaces and essential volumes interact with the landscape, while the surrounding greenery and pool become an integral part of the living experience, emphasizing the direct relationship between light, space, and material.



3D

Atria stands out for its spacious and bright interiors, arranged in a functional layout. Large windows allow abundant natural light to enter, highlighting modern materials and minimalist finishes, creating a contemporary and welcoming environment.



2 bathrooms



3 bedrooms



Living room



Dining room



Kitchen



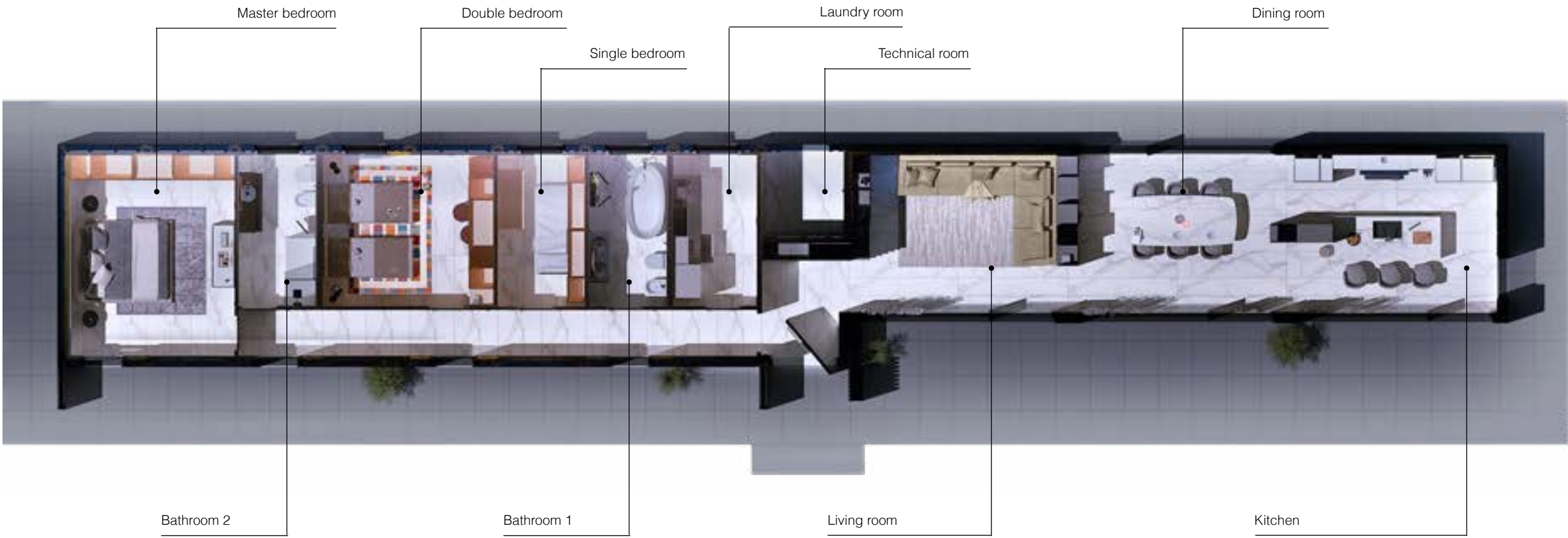
Laundry room



Technical room

2D

Atria stands out for its spacious and bright interiors, arranged in a functional layout. Large windows allow abundant natural light to enter, highlighting modern materials and minimalist finishes, creating a contemporary and welcoming environment.



Production Plant

Loc. Quartaccio – Strada Provinciale 74, km 1.45
01034 Fabrica di Roma (VT) | Italia
Tel. +39 06 4525 4005
info@gammavilla.com

Headquarters

GammaStone – Via Flaminia 148
00068 Rignano Flaminio (RM) | Italia
Tel. +39 06 4525 4005
info@gammavilla.com

North America Inc.

2400 Main Street Ext
Sayreville NJ 08872
Tel. +1 646 741 5850
Tollfree: +1 866 US GAMMA
info.na@gammavilla.com

Dubai

Convention Tower, 4th Floor, DWTC.
Dubai, UAE
info.uae@gammavilla.com

